

XTOOL Selected | HP2

Quick Start Guide



List of items - - - - - 01

Meet xTool Selected HP2 - - - - - 01

Use xTool Selected HP2 - - - - - 03

FAQ - - - - - 12

List of items



xTool Selected HP2



Handle



Power cable



Screwdriver



Butcher paper



Quick start guide



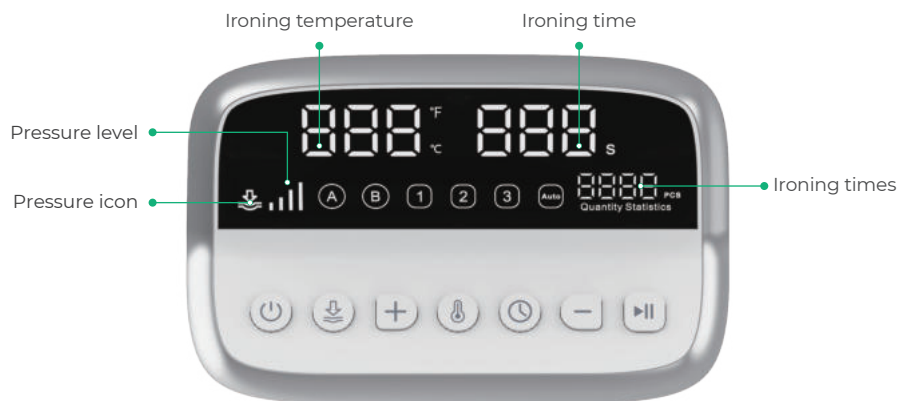
Safety instructions











Meet xTool Selected HP2

Product structure



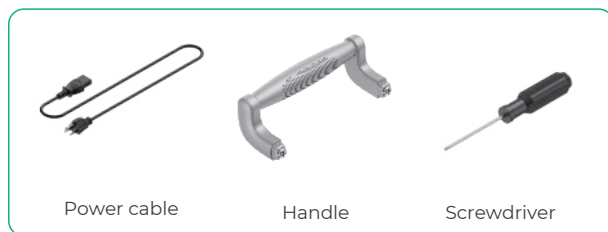
Touchscreen and buttons



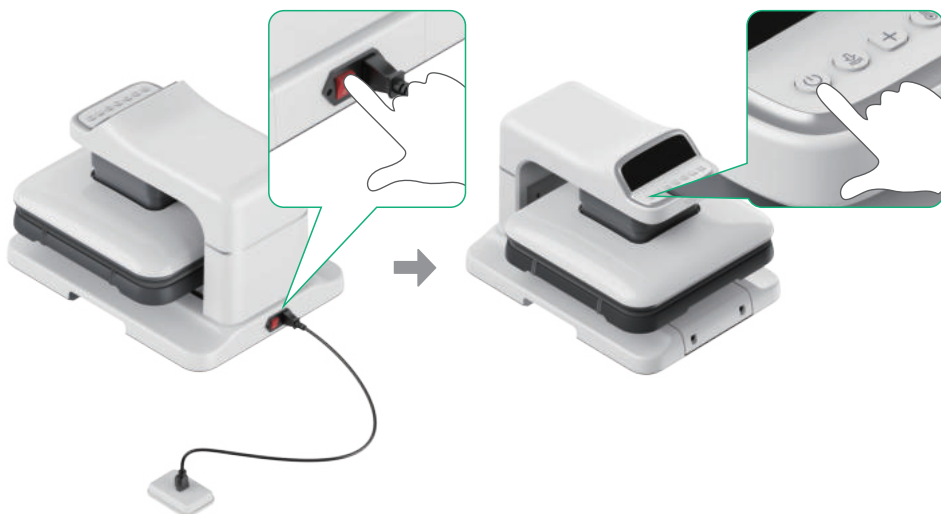
Buttons	Descriptions
 Power button	<ul style="list-style-type: none">After connecting the power, press this button once to turn the device on or off.In the off state, press and hold for 5s to restore factory settings.
 Pressure button	Press to set the pressure level. After the pressure icon flashes, press the increase or decrease button to switch between the pressure levels of 60 kg, 100 kg, 140 kg, and 180 kg.
 Increase button	Press to set the pressure, temperature, and time. <ul style="list-style-type: none">Short press for ± 1, long press for ± 5Press and hold the two buttons simultaneously for 5s to set the auto-shutdown time (15 – 60 minutes, 15 minutes by default).
 Decrease button	
 Temperature button	<ul style="list-style-type: none">Press to enter temperature setting. After the temperature value flashes, press the increase or decrease button to adjust the temperature value (40 – 210°C).Long press for 3s to switch the temperature unit (°C/°F).
 Time button	<ul style="list-style-type: none">Press to enter time setting. After the time value flashes, press the increase or decrease button to adjust the time (1 – 999s).By long pressing this button for 5s, you can reset the ironing times to zero.
 Start/Pause button	Press to start pressing down and the device starts countdown. Press again to pause.
 Custom mode button	Press to select "A" or "B" mode; after selection, you can adjust the pressure, temperature, and time. The default mode is A mode.
 Fixed mode button	Press to select from three fixed modes of which pressure, temperature, and time are pre-set; long press for 3s to adjust the pre-set values.
 Automatic ironing button	Press to enter automatic ironing mode. The heating plate automatically presses down each time the ironing plate is pushed back. Another press will exit this mode.

Use xTool Selected HP2

1. Install the handle



- 1 Connect to power and turn on the device.

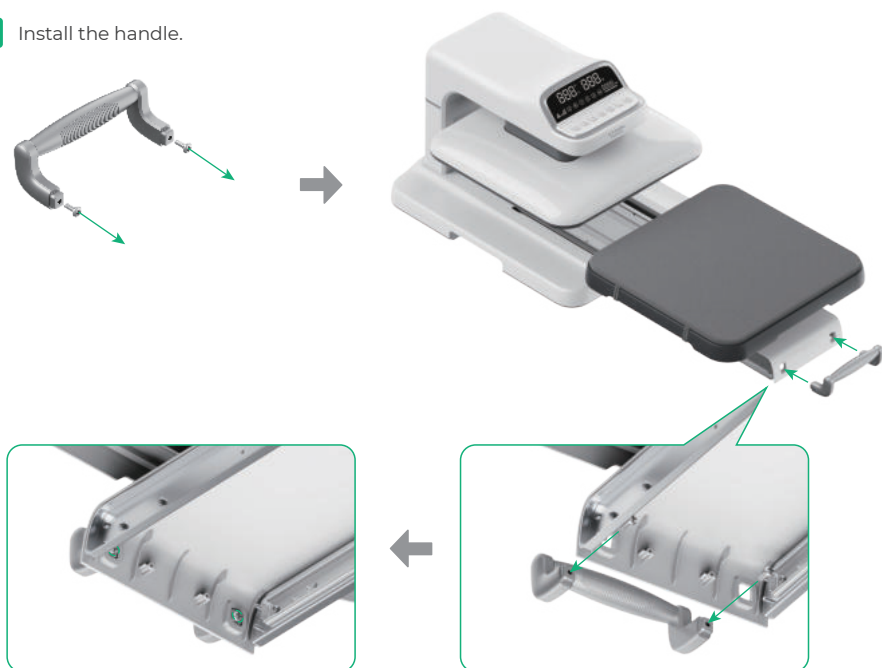


- 2 Pull out the ironing plate.

After the device is turned on, the heating plate will lift automatically. At this time, the ironing plate can be pulled out.



3 Install the handle.



4 Push the ironing plate back.

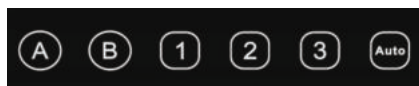


2. Select pressure level



For the processing materials and parameter settings applicable to each mode, please scan the QR code or visit the link for more information.

s.xtool.com/smart-press-platform



- A** Custom mode A, defaults to 160°C (320°F) 15s, pressure level 2
- B** Custom mode B, defaults to 180°C (356°F) 10s, pressure level 3
- 1** 160°C (320°F) 6s, pressure level 3
- 2** 200°C (392°F) 40s, pressure level 2
- 3** 210°C (410°F) 30s, pressure level 4
- Auto** Automatic ironing mode. After a short press, the Auto icon turns green; each time the ironing plate is pushed back to its original position, the heating plate will automatically press down. Short press again can exit the automatic ironing mode.



If no operation is performed on the device within the set automatic shutdown time (15 mins by default), it will automatically shut down.

This guide exemplifies film transfer on a pure-cotton garment using level 1 pressing mode.



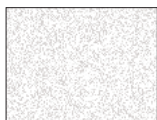
Wait for the device to heat up until the start/pause button turns green.



3. Place processing materials



Pure-cotton garment
(not included in packaging)



Butcher paper

- 1 Pull the handle to extend the ironing plate.



- 2 Place the garment and butcher paper.
Ensure that the garment is smooth and free of wrinkles.



Placing butcher paper on the surface of the garment before heat pressing can prevent dirt on the heating plate from contaminating the garment.

- 3** Push the ironing plate back. Ensure that you push it all the way to the innermost position.



- 4** Press the start/pause button to preheat the processing material for 5 – 10s.



Emergency stop: During the preheating process, pressing any button will pause the device, and the heating plate will automatically lift.

4. Place the heat transfer film



Heat transfer film
(not included in packaging)

- 1 Extend the ironing plate and remove the butcher paper.



- 2 Place the heat transfer film.



The heat transfer film can be fixed on the garment with high-temperature tape.

- 3** Place the butcher paper on the heat transfer film. Then push the ironing plate back to its original position.



5. Processing

- 1** Press the start/pause button. The heating plate will lower down and start processing with countdown displayed.



During the processing, please do not touch the device to avoid pinching or burns.



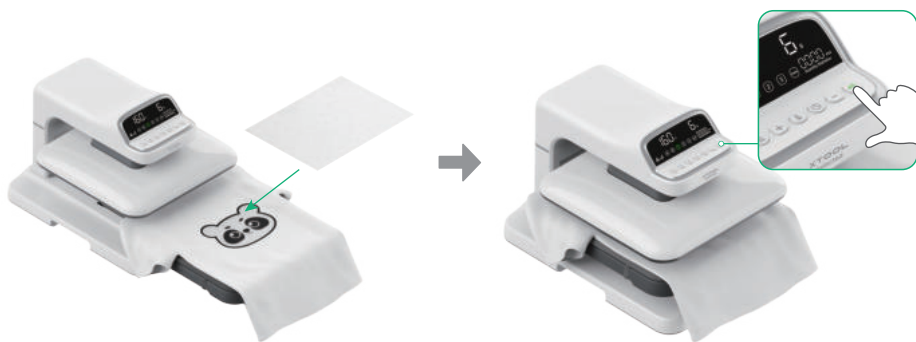
- 2** After processing is done and the heating plate rises, remove the butcher paper and tear off the heat transfer film.



To tear off the heat transfer film more easily, wait for the garment to cool for 10s.



- 3** Heat press again to ensure optimal result.



After processing is done, remove the butcher paper and get your processing work.

6. Shutdown

If you have completed processing, press the power button to turn off the device. After shutdown, the set parameters will be automatically saved.



If no operation is performed on the device within the set automatic shutdown time (15 mins by default), it will automatically shut down.

1 The heating plate does not lift after pressing down. What should I do?

Turn off the device and wait until the heating plate cools down completely. Restart the device and gently lift or shake the heating plate from side to side. The heating plate will reset automatically. (Note: The heating plate automatically heats up when the device is turned on, so be careful not to get burned).

If the problem persists, please contact after-sales technical support.

2 The heating plate does not lower down after I press the Start/Pause button. What should I do?

Check and ensure that the ironing plate has been pushed back to the innermost position.

If the problem persists, please contact after-sales technical support.

3 Is it normal that the device produces slight amount of smoke during processing?

Yes, it is normal.

- If the device has not been used for a long time or is placed in a humid environment, moisture may accumulate inside. When the device is turned on and the heating plate warms up, the moisture will evaporate.
- If the device is used to heat sublimation materials, the heat sublimation ink will sublime and produce gas due to high temperatures.

4 Is it normal for the device to beep?

If the device beeps continuously and displays E1, E2, E3, or E4, the device malfunctions. Please cut off the power immediately and contact the after-sales technical support for troubleshooting.

The following beeps are normal:

- Beep once: Appears when the device status changes or an operation is done. For example, when the device is connected to power, or is turned on/off, users complete parameter setting, or a countdown ends.
- Continuous beeping without E1, E2, E3, or E4: Appears when the heating plate presses down.

5 The touchscreen buttons cannot work. Why and what should I do?

This issue occurs when the device fails to respond properly. To resolve it, power off the device, unplug the power cable, wait for 15 seconds, and then restart the device.

XTOOL Selected