

Quick Guide.

 HEXA

CONTENTS

Quick Guide (English)	02
(Arabic) دليل سريع	06
Кратко ръководство (Bulgarian)	10
Rychlý průvodce (Czech)	14
Kurzanleitung (German)	18
Hurtigguide (Danish)	22
Kiirjuhend (Estonian)	26
Guia rápida (Spanish)	30
Pikaopas (Finnish)	34
Guide rapide (French)	38
Σύντομος Οδηγός (Greek)	42
त्वरति मार्गदर्शिका (Hindi)	46
Brzi vodič (Croatian)	50
Használati útmutató (Hungarian)	54
Panduan Cepat (Indonesian)	58
Stuttar leiðbeiningar (Icelandic)	62
Guida rapida (Italian)	66
クイックガイド (Japanese)	70
제품 안내서 (Korean)	74
Trumpasis gidas (Lithuanian)	78

Ātrais ceļvedis (Latvian)	82
Panduan Pantas (Malay)	86
Kratak Vodič (Montenegrin)	90
Gwida Veloči (Maltese)	94
Snelgids (Dutch)	98
Hurtigguide (Danish)	102
Krótki przewodnik (Polish)	106
guia rápido (Portuguese)	110
Ghid rapid (Romanian)	114
Краткое руководство (Russian)	118
Snabb guide (Swedish)	122
Hitri vodi (Slovenian)	126
Stručný návod (Slovak)	130
Udhëzues i shpejtë (Albanian)	134
Brzi vodič (Bosnian)	138
คู่มือฉบับย่อ (Thai)	142
Maikling Gabay (Pilipino)	146
Hướng Dẫn Nhanh (Vietnamese)	150
快速說明書 (Chinese)	154

Before Getting Started

Please read the "HEXA user manual" before starting to operate the HEXA. You can also refer to the "HEXA Help Center" at <https://support.flux3dp.com/hc/en-us>

Please read the following safety precautions carefully before operating the HEXA. Since the HEXA generates a high power laser, improper operation may result in fire, visual impairment, skin burns, inhalation of toxic substances, and other harmful or adverse health effects to person or property.

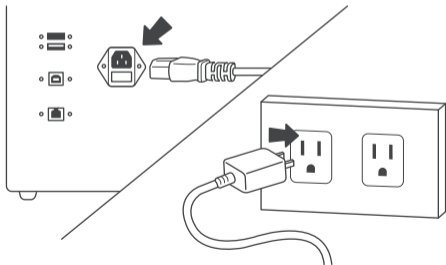
Safety Precautions

- ⚠ Do not leave the HEXA operating unattended. Press pause if you need to step away.
- ⚠ Do not stare at the light produced by the laser while the machine is cutting.
- ⚠ Please confirm the material to be engraved will be safe to burn at high temperatures.
- ⚠ Always have an accessible, functioning fire extinguisher in the workspace.
- ⚠ Do not disassemble the HEXA without prior authorization from FLUX.
- ⚠ Please read the "Safety Precautions" chapter of the "HEXA user manual" attached to the machine for more safety instructions.

Start

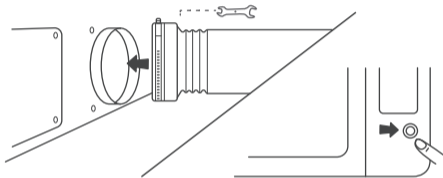
Please read the "Start" chapter of the "HEXA user manual" or you can also refer to the "HEXA Help Center" at <https://support.flux3dp.com/hc/en-us>

1. Plug the power cord into the rear of the machine and into the outlet.



Quick Guide (English)

2. Place the clamp onto the smaller end of the vent hose and thread through to the larger end. Place the larger end of the vent hose into the exhaust port. Tighten the clamp using the provided double head wrench until the vent hose is secure.



3. Turn on the machine by pressing the power button. The first startup may take up to two minutes.
 4. Follow the machine prompts. Please refer to **[Connection Settings]** in the "HEXA user manual" for other connection methods. Make sure the machine and any connected devices are on the same local area network.
- * Before engraving, you must select the language and network on the machine. You must also download and set up the software in order to pair the computer and the machine.

Declaration of Conformity



We hereby declare under our sole responsibility that the product is in compliance with the essential requirements. The full text of the EU declaration of conformity is available at the following internet address.
<https://www.flux3dp.com/declaration>

FLUX HEXA complies with IEC 60825-1:2014 (Third Edition) Class 1 Laser Product.

Class 1 offers the highest safety. Class 1 lasers are not dangerous under "reasonably foreseeable conditions and during normal operation". This means that the laser system is encapsulated in a way that no radiation can escape.

Collection and Treatment



This symbol indicates that this product should not be disposed of with household waste. It has to be returned to a local authorized collection system. By following this procedure you will contribute to the protection of the environment and human health. The recycling of the materials will help to conserve natural resources.

* Valid in the EU member states and in any country with corresponding legislation.

Før du går i gang

Læs "HEXA-brugervejledningen", før du begynder at betjene HEXA. Du kan også se "HEXA Help Center" at <https://support.flux3dp.com/hc/en-us>

Læs følgende sikkerhedsanvisninger omhyggeligt, før du betjener HEXA. Da HEXA-laseren producerer en laser med høj effekt, kan forkert betjening medføre brand, nedsat syn, forbrændinger på huden, indånding af giftige stoffer og andre skadelige eller skadelige virkninger for personer eller ejendom.

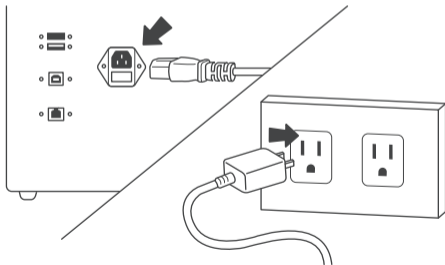
Sikkerhedsforskrifter

- ⚠ Lad ikke HEXA køre uden opsyn. Tryk på pauseknappen, hvis du går.
- ⚠ Kig ikke ind i lyset fra laseren, mens maskinen skærer.
- ⚠ Sørg for, at det materiale, der skal graves, kan brændes sikkert ved høje temperaturer.
- ⚠ Hav altid en tilgængelig, fungerende brandslukker til rådighed på arbejdspladsen.
- ⚠ HEXA må ikke skilles ad uden forudgående godkendelse fra FLUX.
- ⚠ Læs kapitlet "Sikkerhedsforskrifter" i "HEXA-brugervejledningen", der er vedlagt maskinen, for at få flere sikkerhedsinstruktioner.

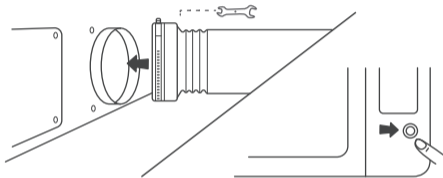
Opstart

Læs kapitlet "Opstart" i "HEXA-brugervejledning", eller du kan også se "HEXA Help Center" at <https://support.flux3dp.com/hc/en-us>

1. Sæt strømkalet i maskinen bagpå og i stikkontakten.



2. Sæt klemmen på den mindre ende af udluftningsslangen, og træk den igennem til den større ende. Sæt den større ende af udluftningsslangen ind i udluftningsåbningen. Spænd klemmen med den medfølgende skruenøgle, indtil udluftningsslangen sidder fast.



3. Tænd maskinen ved at trykke på tænd/sluk-knappen. Den første opstart kan tage op til to minutter.

4. Følg anvisningerne på maskinen. Se **【Connection Settings】** i "HEXA-brugervejledning" for andre forbindelsesmetoder. Sørg for, at maskinen og eventuelle tilsluttede enheder er på det samme lokale netværk.

* Før du graverer, skal du vælge sprog og netværk på maskinen. Du skal også downloade og konfigurere softwaren for at kunne parre computeren og maskinen.

Overensstemmelseserklæring



Vi erklærer hermed på eget ansvar, at produktet er i overensstemmelse med de væsentlige krav.
EU-overensstemmelseserklæringen i sin fulde ordlyd findes på følgende internetadresse.
<https://www.flux3dp.com/declaration>

FLUX HEXA er i overensstemmelse med IEC 60825-1:2014 (Tredje udgave), Klasse 1 laserprodukt.

Klasse 1 giver den højeste sikkerhed. Klasse 1 lasere er ikke farlige under "under rimeligt forudsigelige forhold og under normal drift". Det betyder, at lasersystemet er indkapslet på en sådan måde, at ingen stråling kan slippe ud.

Indsamling og behandling



Dette symbol angiver, at dette produkt ikke må bortskaffes sammen med husholdningsaffald. Det skal afleveres til et lokalt godkendt indsamlingssystem. Ved at følge denne procedure bidrager du til at beskytte miljøet og menneskers sundhed. Genanvendelsen af materialerne vil bidrage til at bevare naturressourcerne.
* Gyldig i EU's medlemsstater og i alle lande med tilsvarende lovgivning.

FLUX Inc.

9F, No. 465, Sec. 6, Zhongxiao E. Rd.,
Nangang Dist., Taipei, Taiwan

(+886)2-6605-7055 | flux3dp.com

FLUX, the FLUX Logo, and any other marks are trademarks of
FLUX Inc. or its subsidiaries. For more information, see flux3dp.com.
*Other names and brands may be claimed as the property of others.